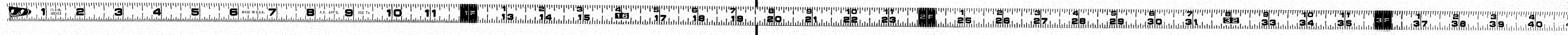
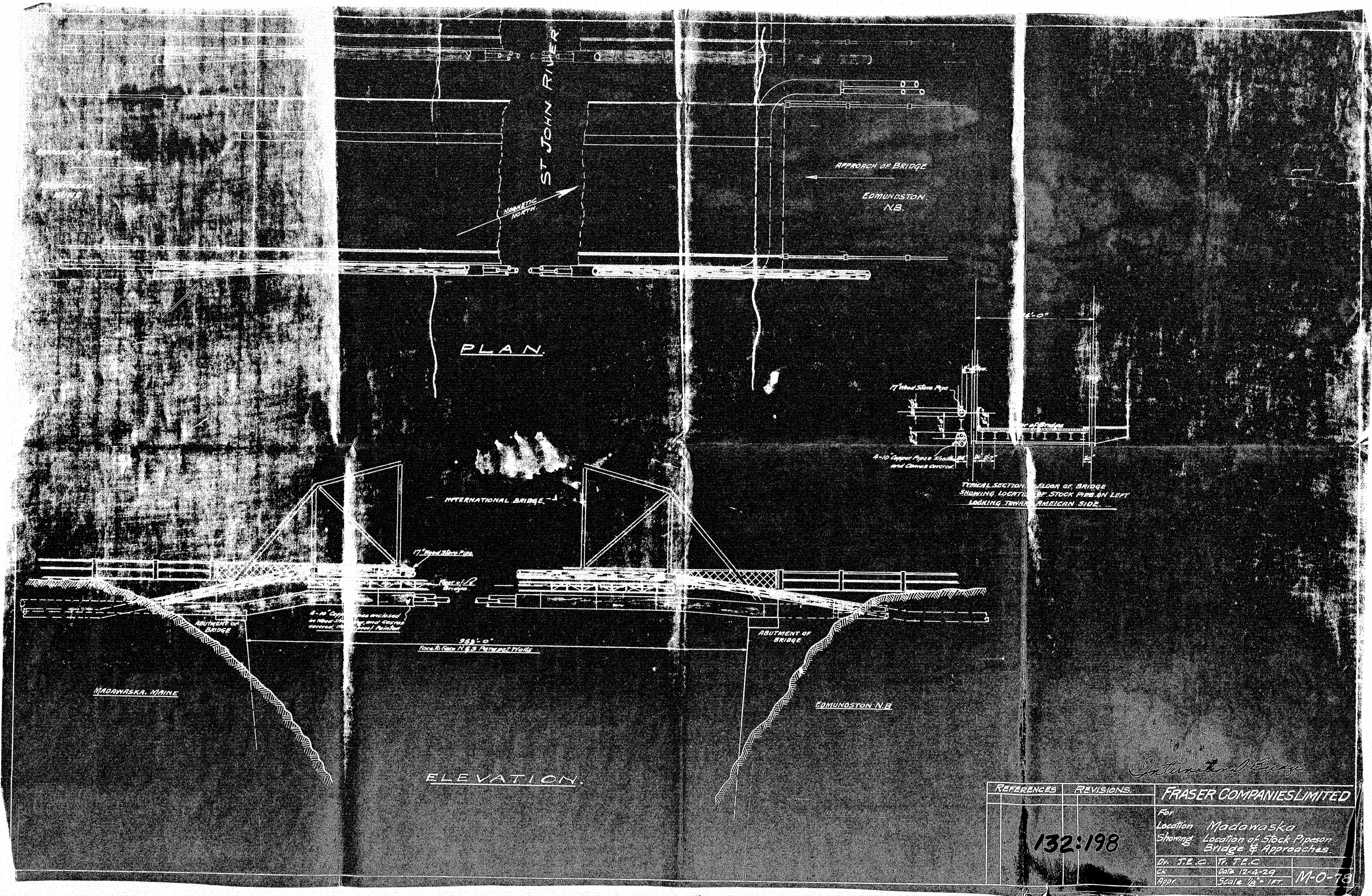


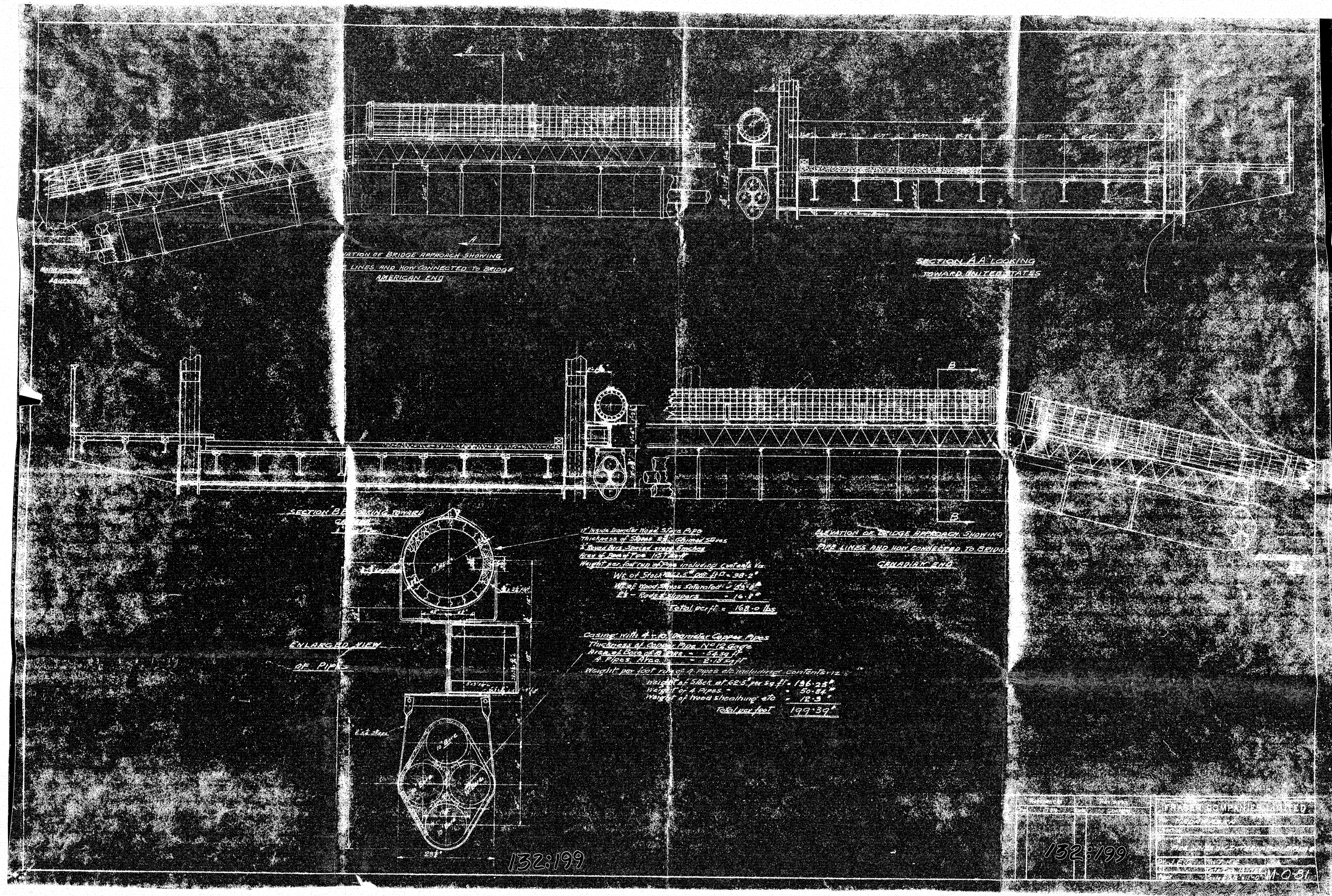
Intercontinental B.

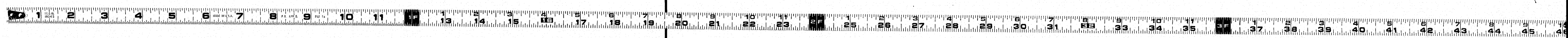
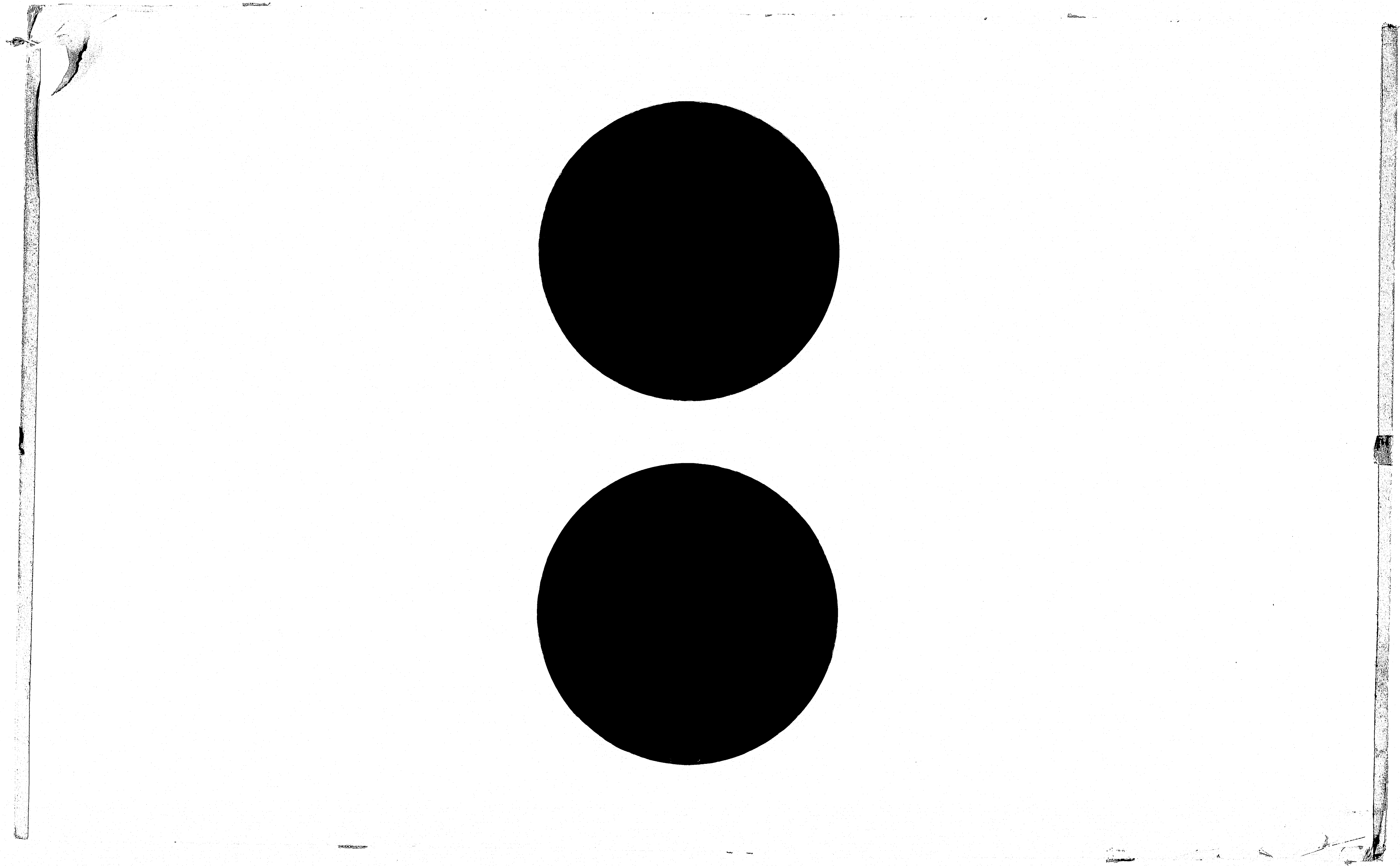
FOR FRASER COS. LTD.
PROJECT - SLEWING AND HYDRAULIC POWER PLANTS
DRAWING - STOCKPILE NO. 1000
DRAWING - STOCKPILE NO. 1000
DATE - 1951
DRAWING NO. C-121
DHS No.

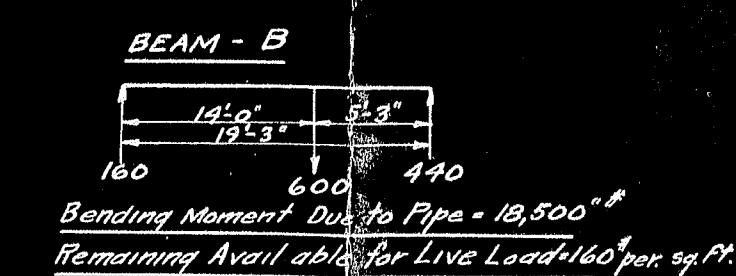
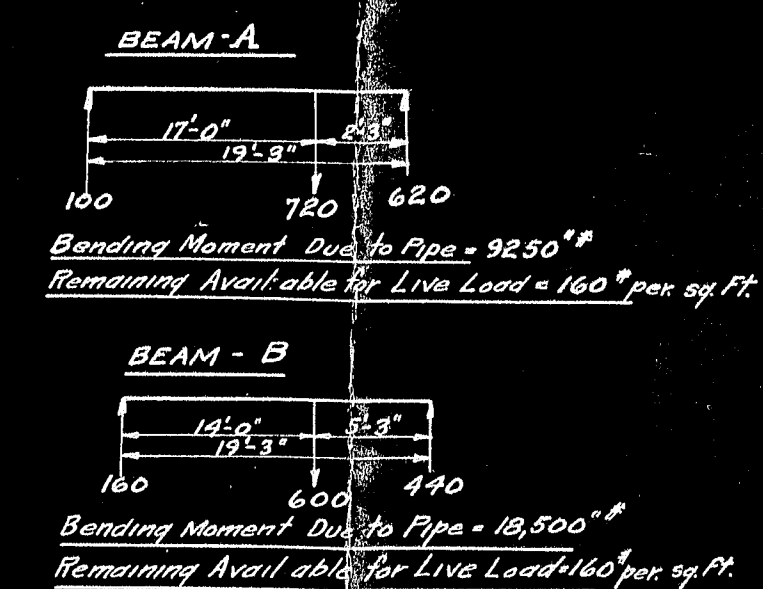
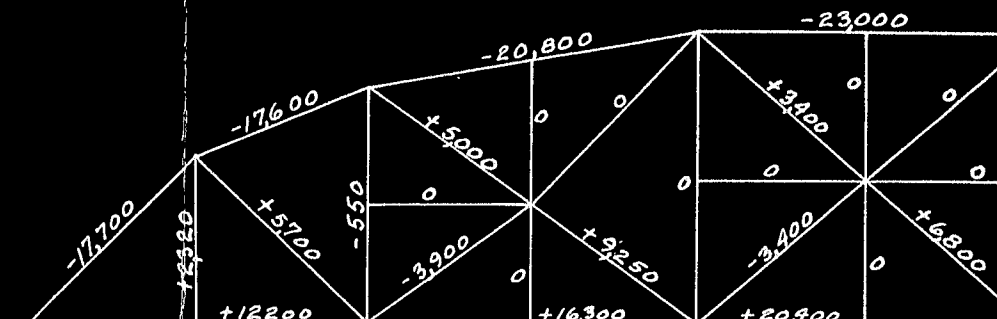
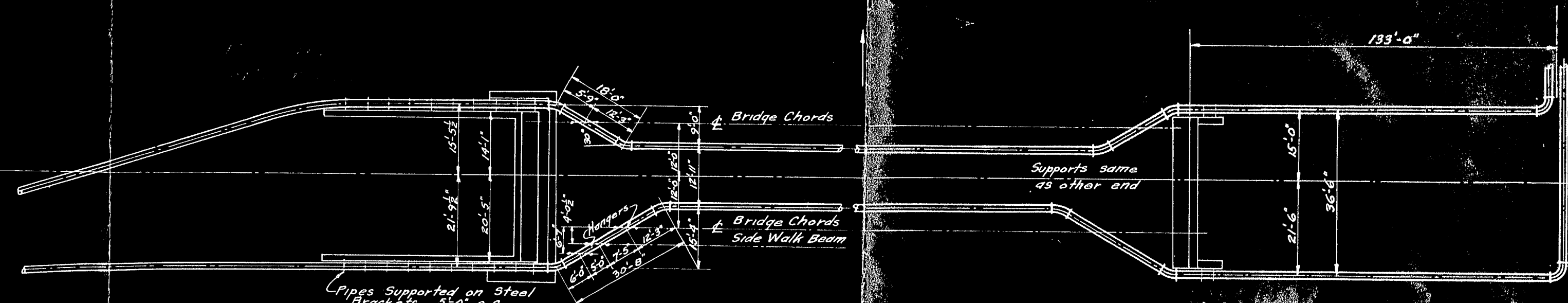
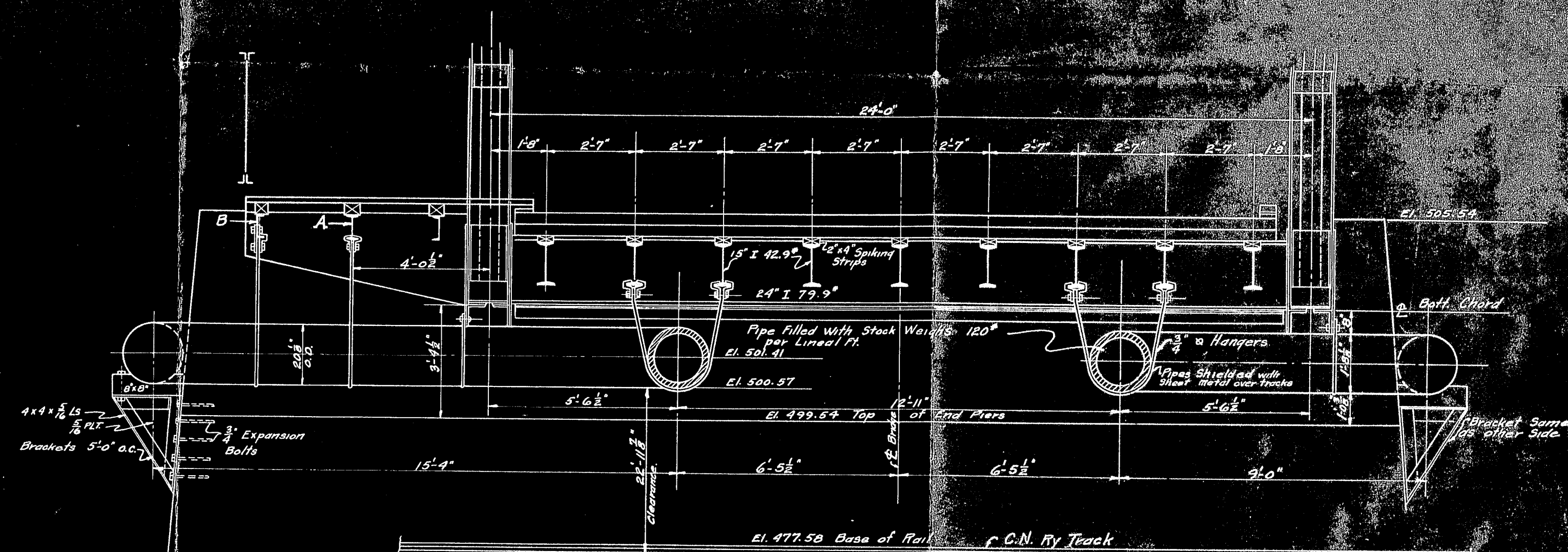
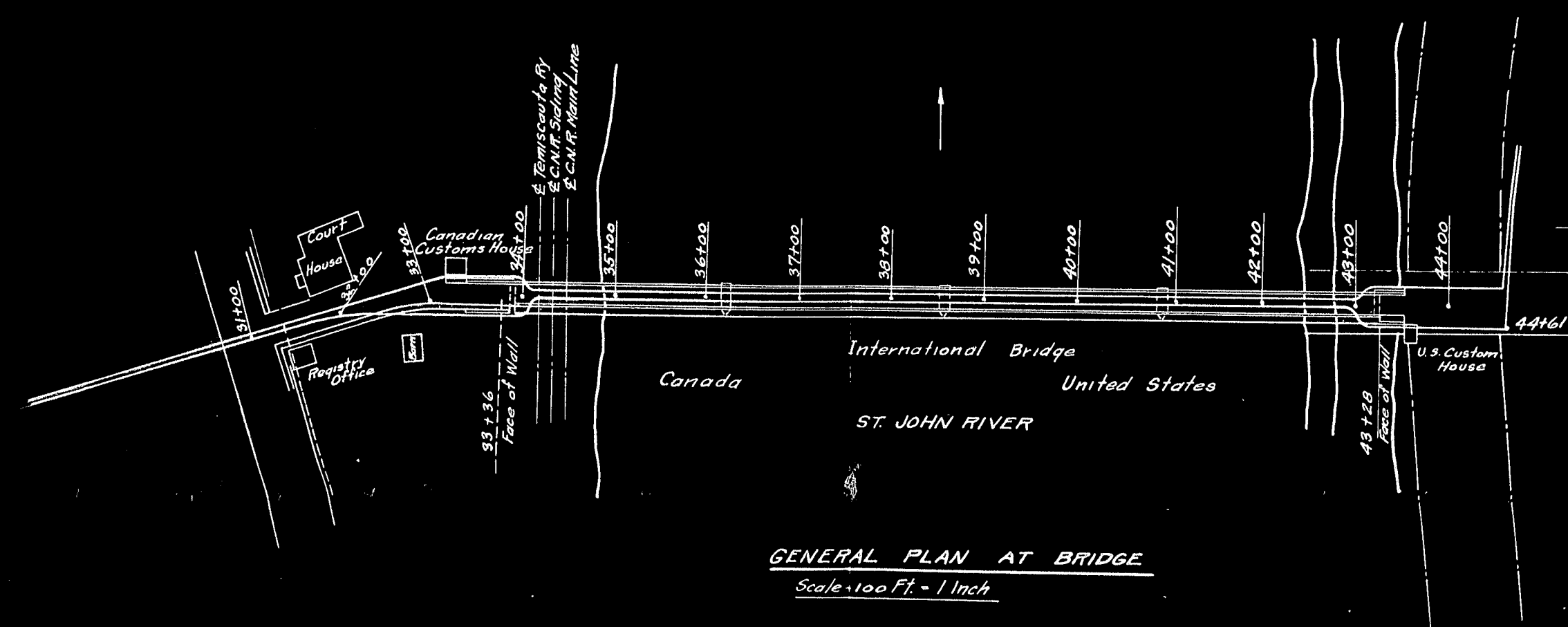
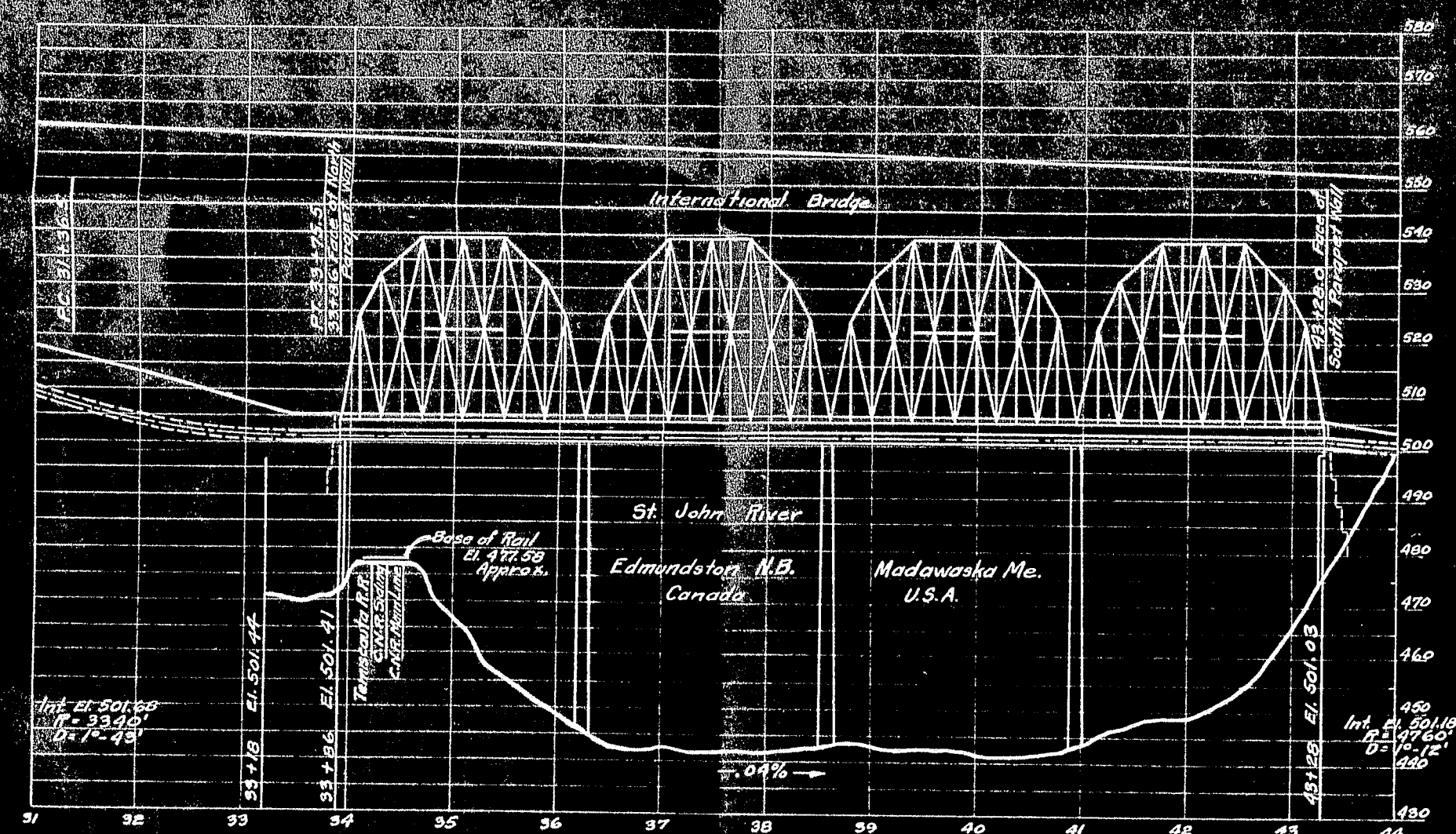
132:197



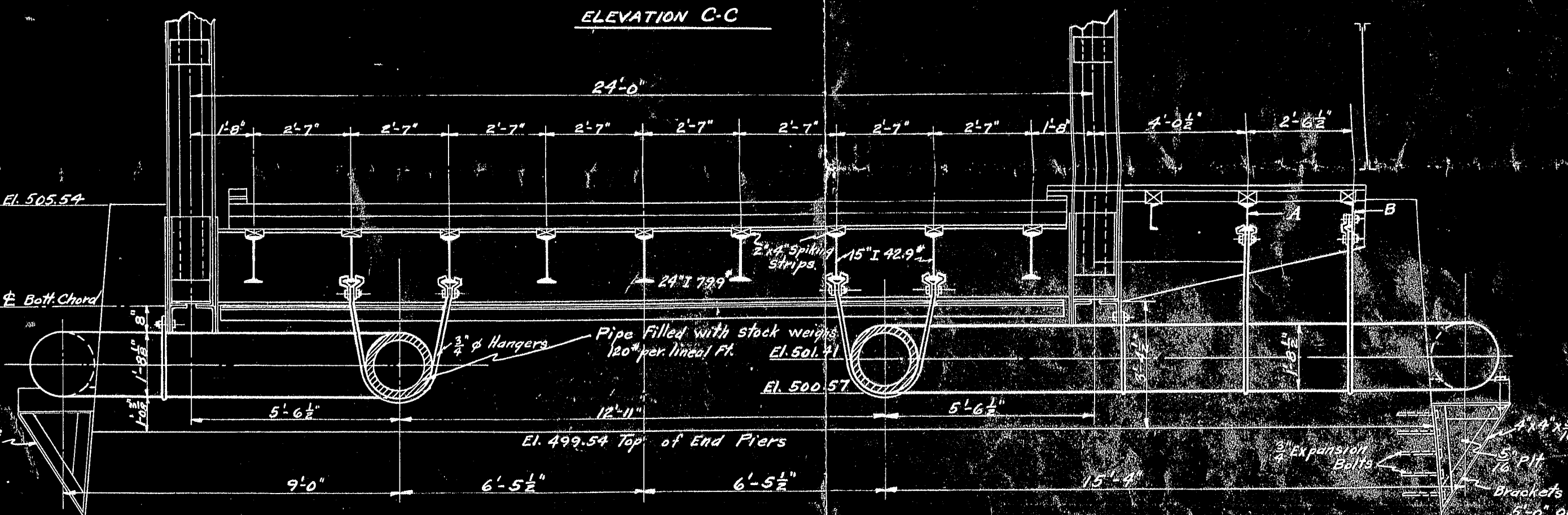
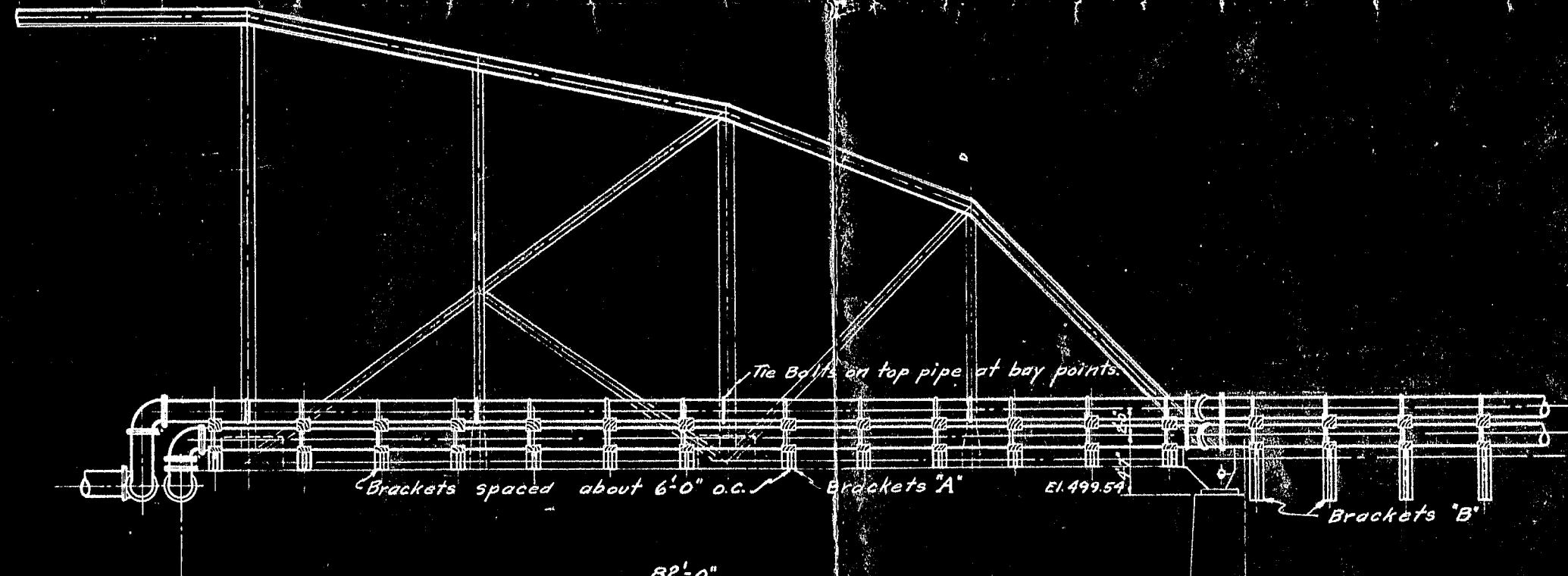
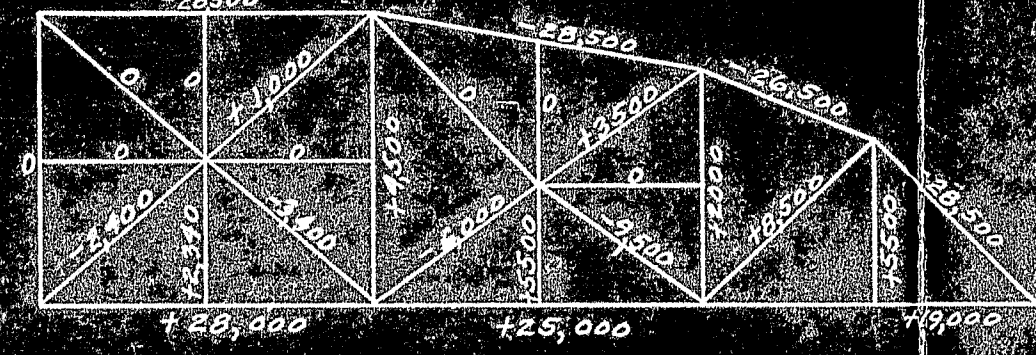
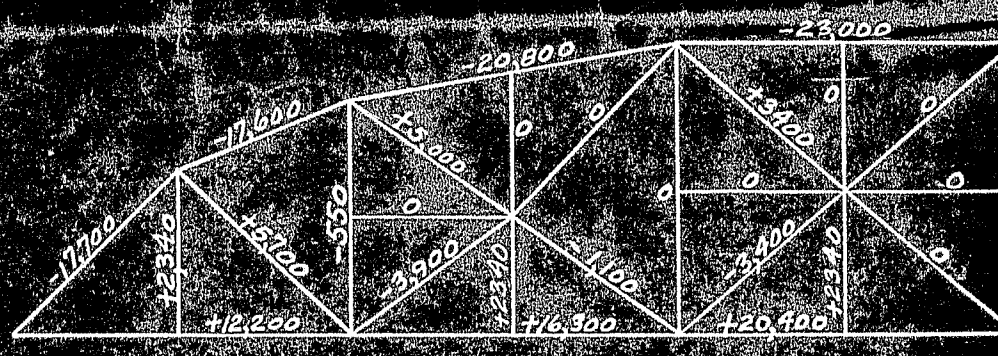
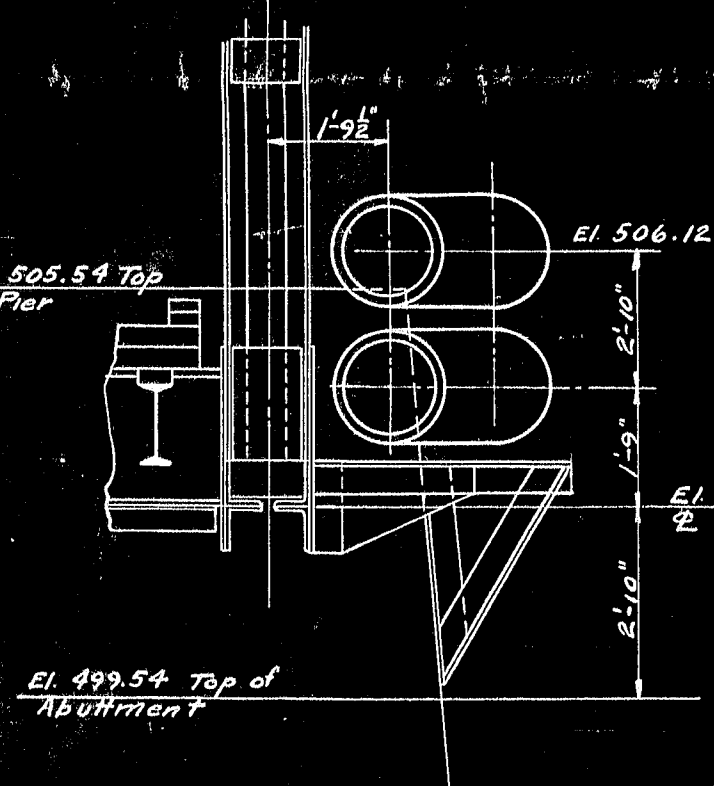
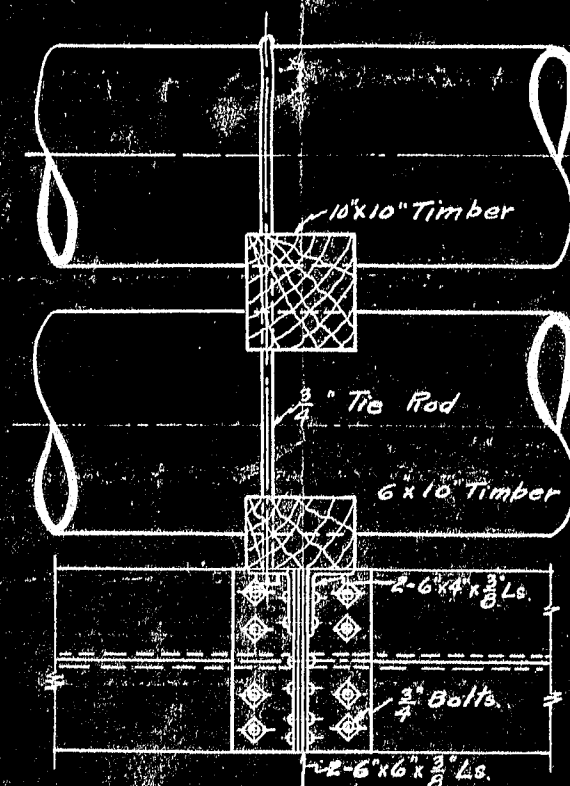
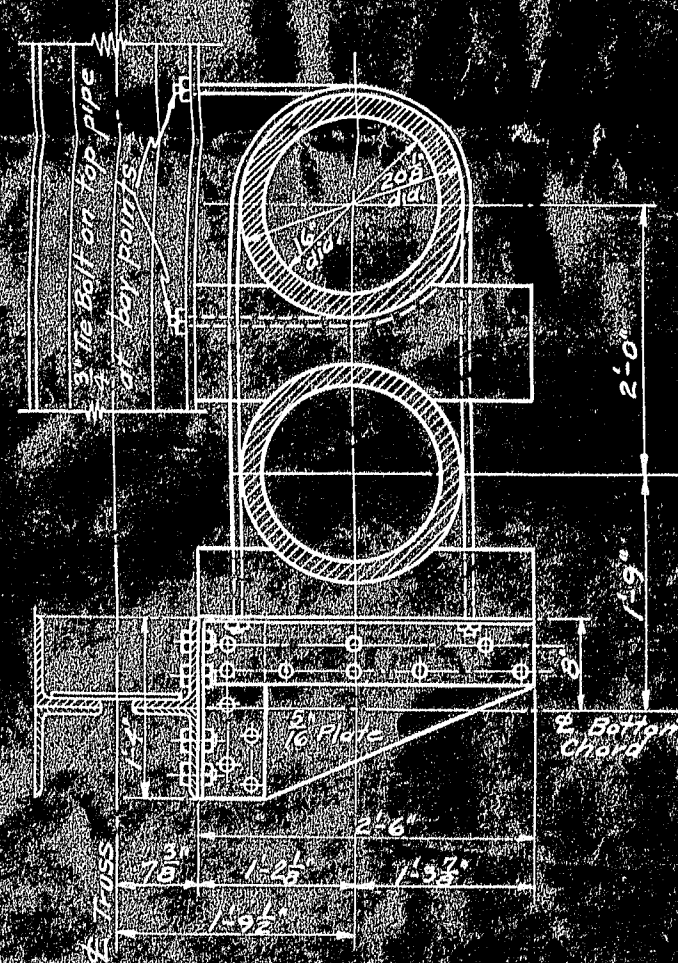
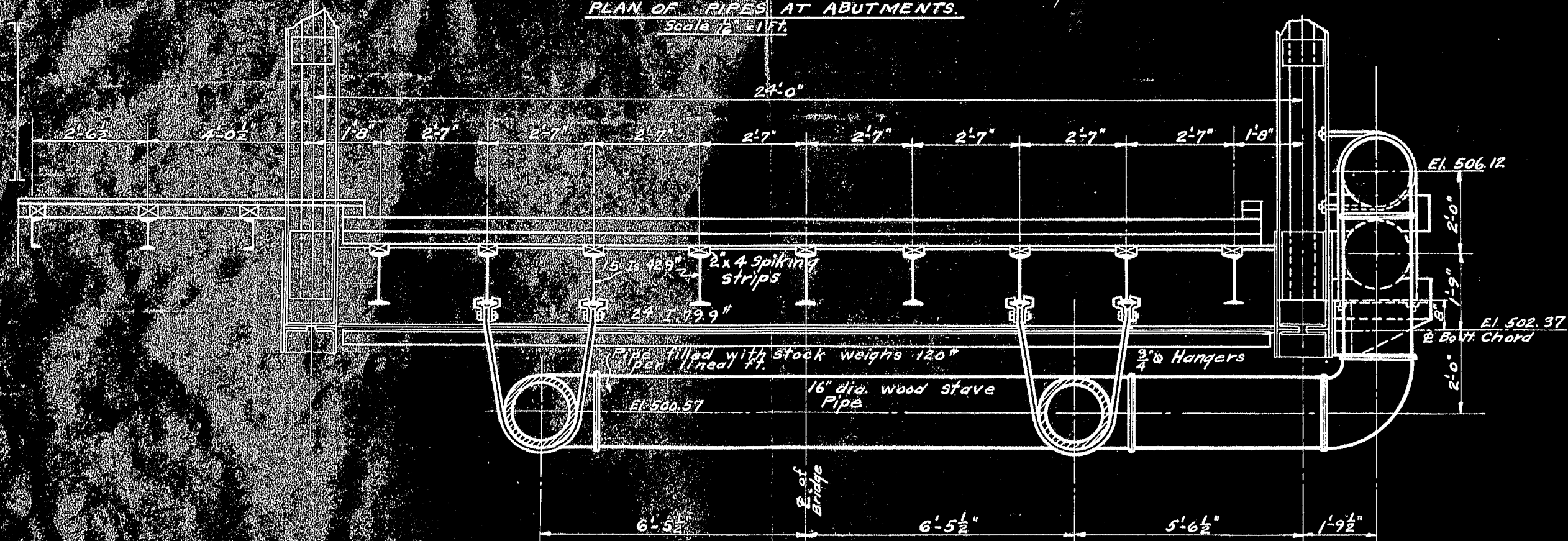
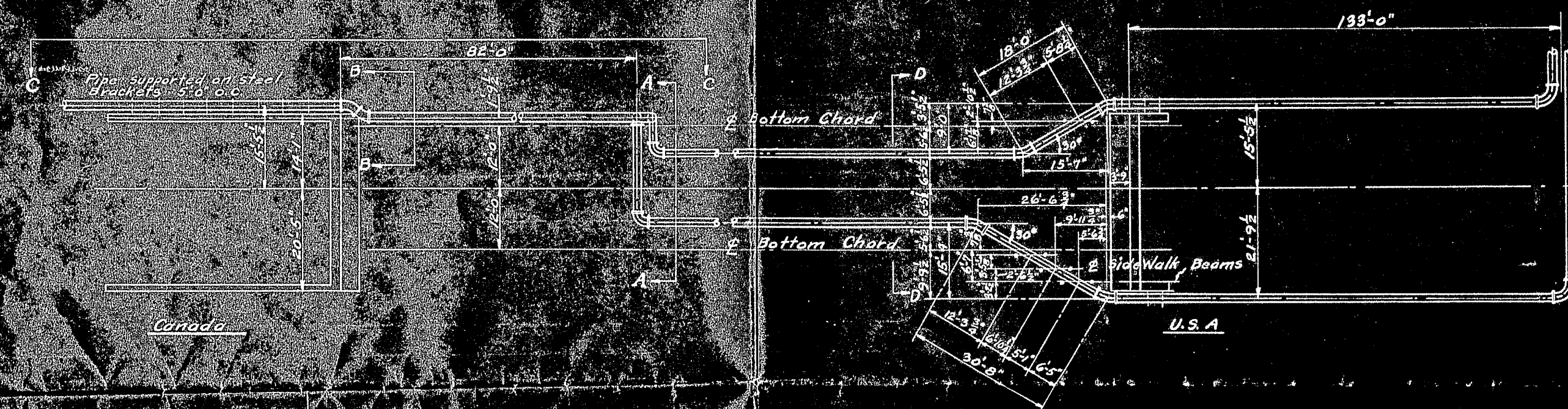
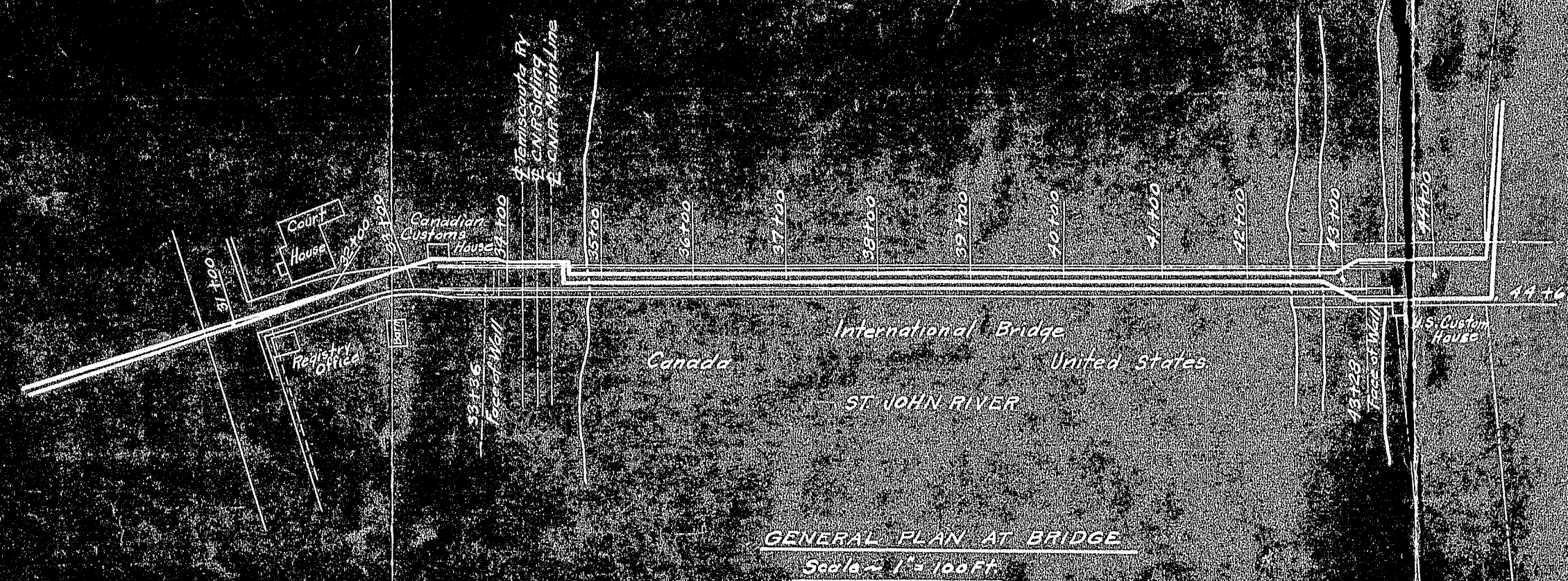
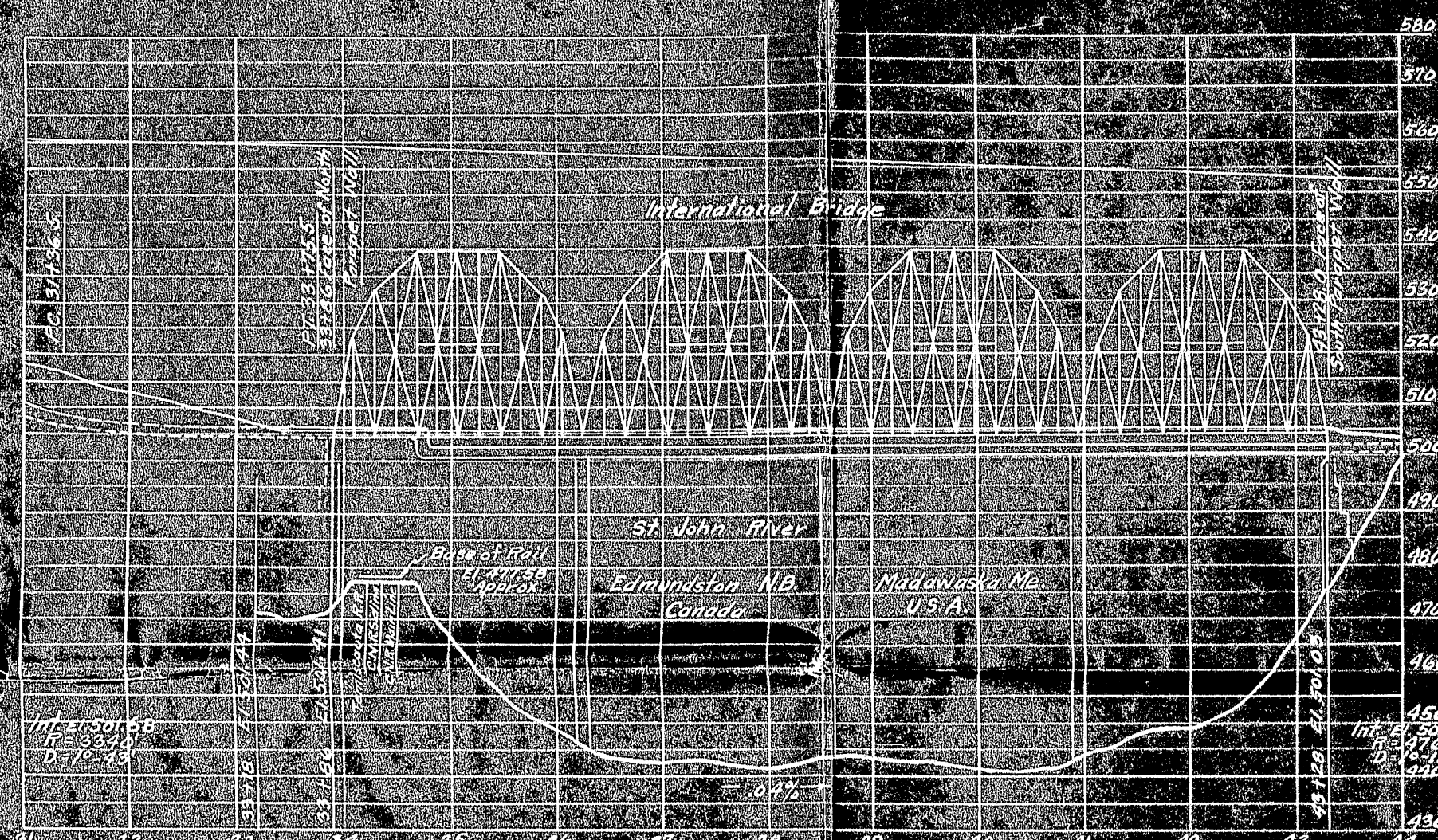








MANAGEMENT ENGINEERING AND DEVELOPMENT CO. CITY NATIONAL BANK BLDG., DAYTON, OHIO.		
<u>PIPE LINE OVER INTERNATIONAL BRIDGE</u> <u>EDMUNDSTON HS TO MADAWASKANE</u>		
MADAWASKANE		
SCALE: AS NOTED	DRAWING NO.	SHEET NO. 24 OF 25
OWNER: C. W. M.		REVISED
DESIGNED BY: V. L. G.	1343	
CHECKED BY:		



MANAGEMENT ENGINEERING AND DEVELOPMENT CO.
CITY NATIONAL BANK BLDG., BOSTON, MASS.
PIPE LINES OVER INTERNATIONAL BRIDGE
EDMUNDSTON, N.B. TO MADAWASKA, N.B.
MADAWASKA, N.B.
SHEET 4317070
DRAWING NO. 1343A
DATE: April 4, 1935
CHECKED BY: [Signature]
DESIGNED BY: [Signature]